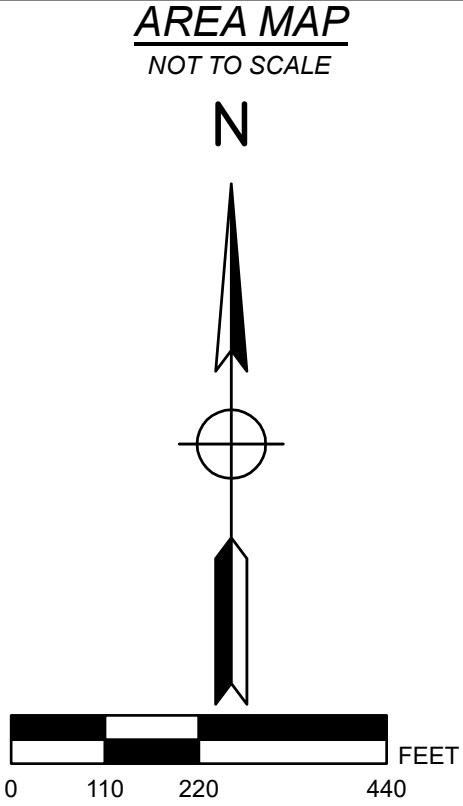
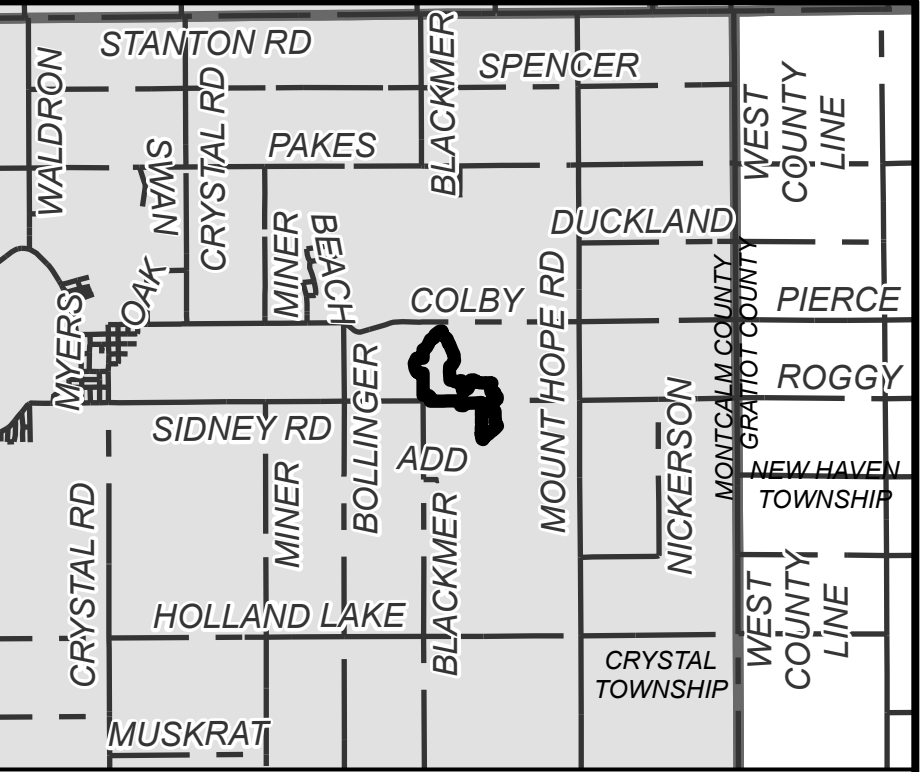
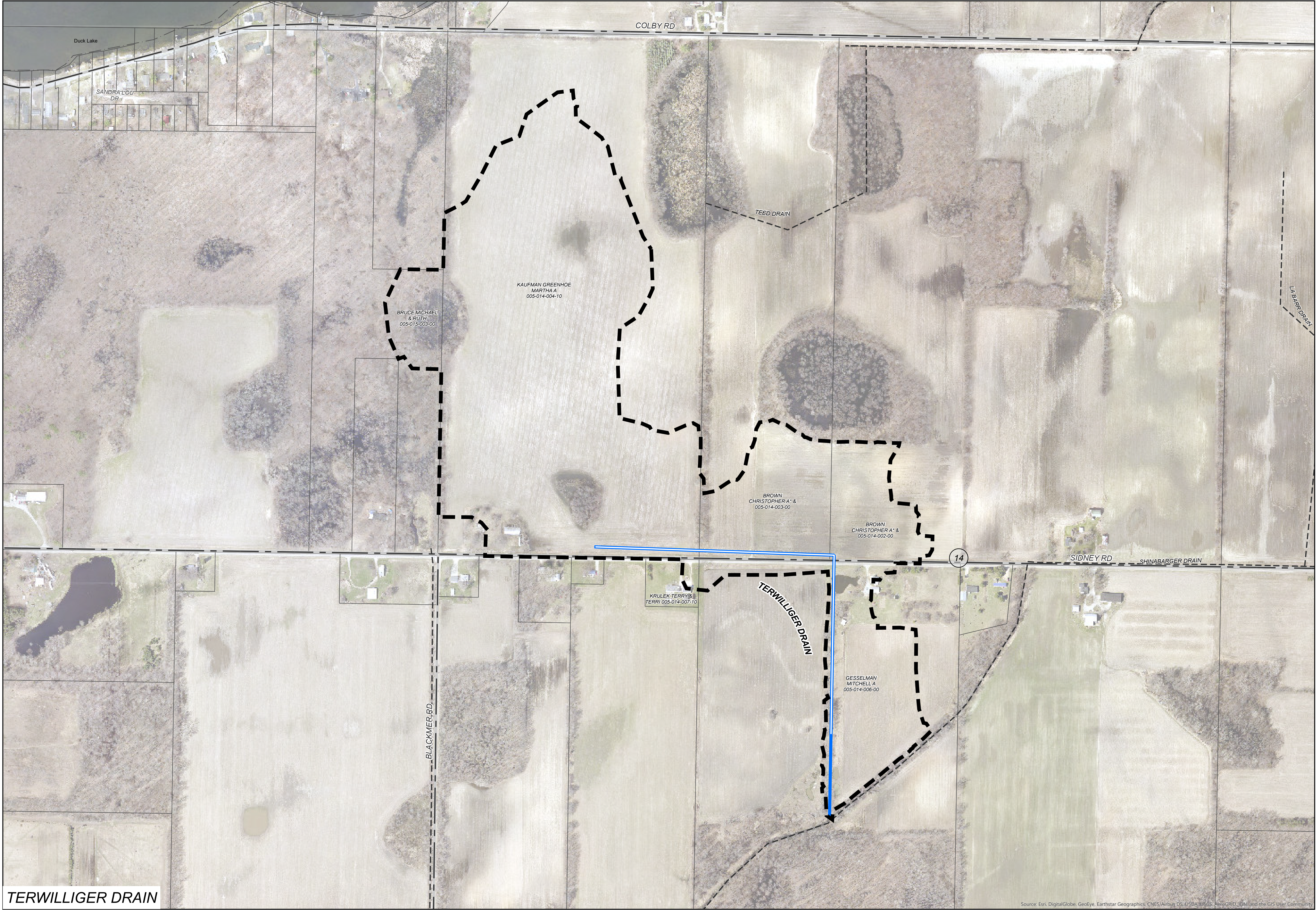




TERWILLIGER DRAIN


MONTCALM COUNTY, MICHIGAN

MONTCALM COUNTY DRAIN COMMISSIONER - SANDY RAINES



- LEGEND**
- DRAINAGE DISTRICT BOUNDARY
 - APPROXIMATE OPEN DRAIN LOCATION
 - APPROXIMATE TILE DRAIN LOCATION
 - OTHER DRAINS
 - OTHER WATERCOURSES
 - STATE ROADS
 - COUNTY ROADS
 - LOCAL ROADS
 - RAILROAD
 - MUNICIPALITY BOUNDARY
 - COUNTY BOUNDARY

DRAINAGE DISTRICT BREAKDOWN	
PROPERTY OWNERS ASSESSABLE ACREAGE	
CRYSTAL TOWNSHIP	78.50 AC.
TOTAL ACREAGE IN DISTRICT	
78.50 AC.	
LENGTH OF DRAIN	
TERWILLIGER DRAIN	2,539 FT.

PLF	DAY OF REVIEW OF APPOINTMENTS		08/30/2018
BY	MARK	REVISIONS	DATE
THE WORK REPRESENTED BY THIS DRAWING WAS DESIGNED BY THE ENGINEER FOR THIS SPECIFIC APPLICATION AND SPECIFIC LOCATION DESCRIBED HEREON IN ACCORDANCE WITH THE CONDITIONS PREVALENT AT THE TIME THE DESIGN WAS DONE. THE ENGINEER DOES NOT GUARANTEE AND WILL NOT BE LIABLE FOR ANY OTHER LOCATION, CONDITION, DESIGN OR PURPOSE.			
TERWILLIGER DRAIN MONTCALM COUNTY, MICHIGAN			
DRAINAGE DISTRICT MAP			
		ST. JOHN'S OFFICE 1400 Zeeb Drive St. Johns, MI 48879 Tel. 989-224-2355 www.SpicerGroup.com	
DE. BY: MKT	CH. BY: MKT	PROJECT NO.	
DR. BY: MKT	APP. BY: PLF	123600SG2016	
STDS.	SHEET 1	OF 1	DR
DATE SEPTEMBER 2019	FILE NO.	1	
SCALE 1"=225'	-		