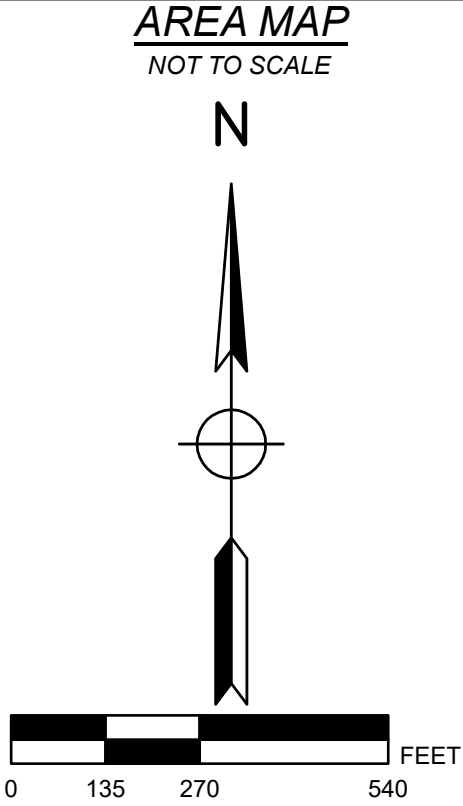
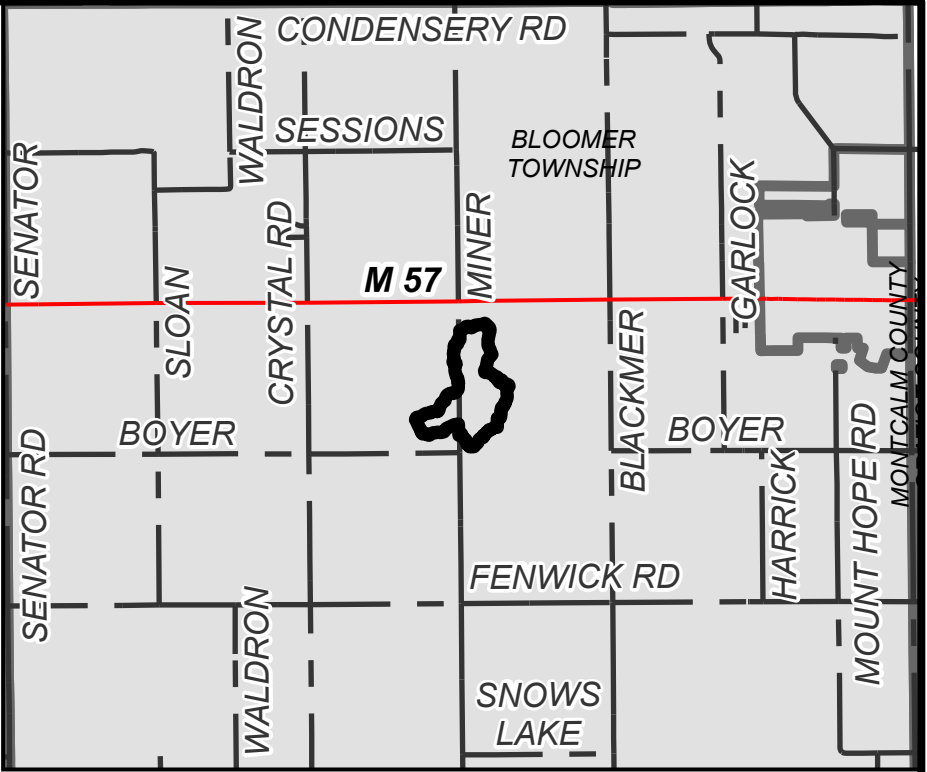
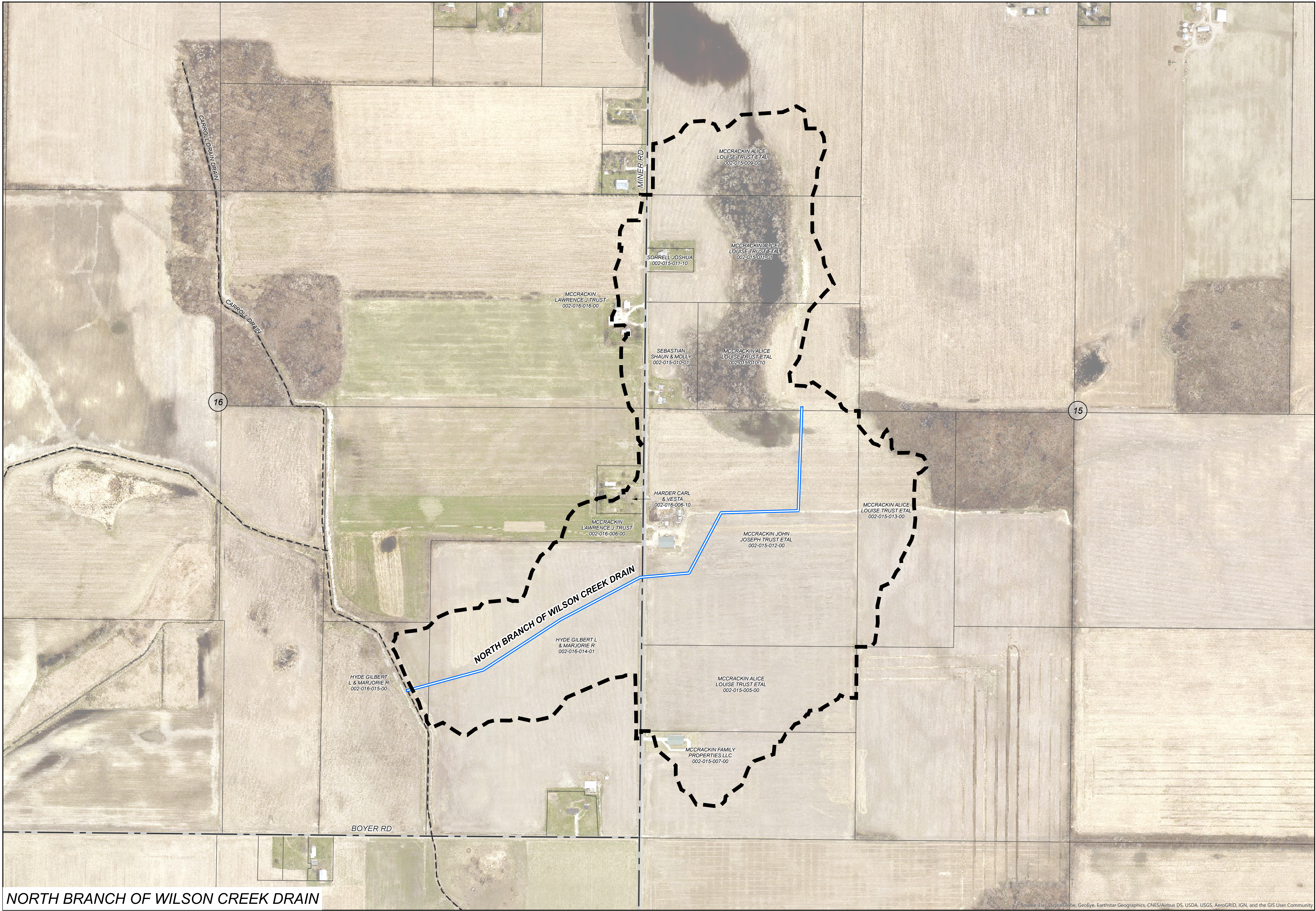




# NORTH BRANCH OF WILSON CREEK DRAIN


## MONTCALM COUNTY, MICHIGAN

MONTCALM COUNTY DRAIN COMMISSIONER - SANDY RAINES



- LEGEND**
- DRAINAGE DISTRICT BOUNDARY
  - APPROXIMATE OPEN DRAIN LOCATION
  - APPROXIMATE TILE DRAIN LOCATION
  - OTHER DRAINS
  - OTHER WATERCOURSES
  - STATE ROADS
  - COUNTY ROADS
  - LOCAL ROADS
  - RAILROAD
  - MUNICIPALITY BOUNDARY
  - COUNTY BOUNDARY

DRAINAGE DISTRICT BREAKDOWN	
PROPERTY OWNERS ASSESSABLE ACREAGE	
BLOOMER TOWNSHIP	148.67 AC.
TOTAL ACREAGE IN DISTRICT	
	148.67 AC.
LENGTH OF DRAIN	
NORTH BRANCH OF WILSON CREEK DRAIN	3,442 FT.

PLF		DAY OF REVIEW OF APPOINTMENTS		08/28/2018
BY	MARK	REVISIONS		DATE
THE WORK REPRESENTED BY THIS DRAWING WAS DESIGNED BY THE ENGINEER FOR THIS SPECIFIC APPLICATION AND SPECIFIC LOCATION DESCRIBED HEREON IN ACCORDANCE WITH THE CONDITIONS PREVALENT AT THE TIME THE DESIGN WAS DONE. THE ENGINEER DOES NOT GUARANTEE AND WILL NOT BE LIABLE FOR ANY OTHER LOCATION, CONDITION, DESIGN OR PURPOSE.				
NORTH BRANCH OF WILSON CREEK DRAIN MONTCALM COUNTY, MICHIGAN				
DRAINAGE DISTRICT MAP				
		ST. JOHN'S OFFICE 1400 Zeeb Drive St. Johns, MI 48879 Tel. 989-224-2355 www.SpicerGroup.com		
DE. BY: MKT	CH. BY: MKT	PROJECT NO.		
DR. BY: MKT	APP. BY: PLF	123600SG2016		
STDS.	SHEET 1	OF 1	DR 1	
DATE SEPTEMBER 2019	FILE NO.			
SCALE 1"=275'				